

TECHNOLOGY IS THE FUTURE

INDUSTRY TODAY

With the acquisition of Cloostermans, Amazon continues to invest in customized state-of-the-art technology to drive innovation in its workplace and improve the employee experience.

Since Amazon began introducing robotics into its facilities in 2012, it has deployed more than 520,000 robotic drive units worldwide while also creating over a million new jobs. Automation has led to new roles at its facilities, including jobs such as robotics and mechatronics maintenance technicians as well as flow control specialists.

E-commerce fulfillment company Deliverr integrates with eCommerce marketplaces, such as Walmart, eBay, Amazon, Shopify, Wish, and BigCommerce has been using Best Inc.'s service since 2021.

OUR HIGHLIGHTS

Best Inc. is a full service 3rd Party Fulfillment Provider that specializes in e-commerce and omni-channel fulfillment. All of our services are powered by our in-house Order Management (OMS) and Warehouse Management Systems (WMS) to give your supply chain ultimate flexibility. Through Best Inc., we process your orders with accurate results, efficient handling, and accurate inventory checks. Our warehouses are located across the country to ensure that your products are delivered safely to your customers promptly.

TO STREAMLINE YOUR OPERATION WITH BEST, WE RELEASED THE FOLLOWING FEATURES RECENTLY

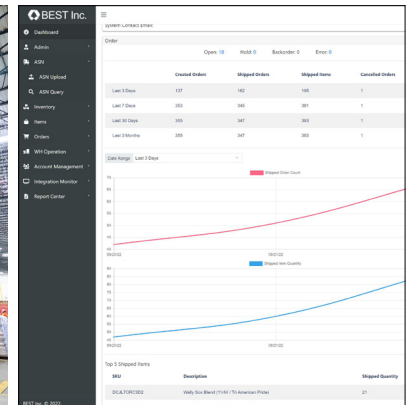
- Multi-channel integration. USOMS Integrated with a powerful integration engine. To support the following:
 - Integration is available for 100+ Ecommerce Integrations. This integration provides additional options for clients to manage multichannel sales and fulfillment.
 - Integrations include:
 - Order download and tracking Upload
 - Inventory management



Amazon warehouse (Photographer: Rachel Jessen/Bloomberg)



One of the Best Inc.'s warehouses in the U.S.



Best Inc.'s self-developed industry leading management system "OMS"

- Inventory Turnover Ratio. Managing inventory effectively and efficiently is important. To better understanding the data around inventory, BEST USOMS is now offer the Inventory Turnover Ratio function to help monitor inventory status.
- Shipping Window - Scheduled Order Release. Clients are now able to schedule the ship date for orders. Scheduled orders will be dispatched on specified date to meet our

client's business needs.

- Signed BOL copy for freight shipment. For Freight Shipment, signed BOL is required for clients and their customers. The copy of signed BOL is now available through email notification and order list.
- Return shipping label with charge estimation. The shipping cost is now available for your reference. This will help our clients to evaluate the return cost before sending it to customers.

- Packing material report. BEST team understands the packing material is one of the important assets from our clients. USOMS has added an indicator to identify packing material items to help our clients to monitor the status of all available packing materials.
- Package first scan information is now available for packages shipped by major carriers.


best-inc.us

Tel: (626) 626-7665
Email: us-sales@best-inc.com

New Jersey Address:
11 Corn Rd Dayton, NJ 08810

Los Angeles Address:
5125 Schaefer Ave, Ste 101 Chino, CA



Scan QR code
to get all the info